



ERIS

Emergency Response Intelligent
& Integrated Software



Fast response to distress is key to the overall success of a Search and Rescue (SAR) operation. The result of SAR depends on the speed with which the operation is planned and carried out. Thorough evaluation of the situation, an immediate decision on the best course of action, and timely activation of SAR facilities lead the operation to a successful end.

Search & Rescue (SAR) software allows straightforward control of SAR missions and SAR resources. The SAR module helps operators to efficiently determine search areas, estimate resources required, and calculate search patterns.



Emergency Response Intelligent & Integrated Software (ERIIS)



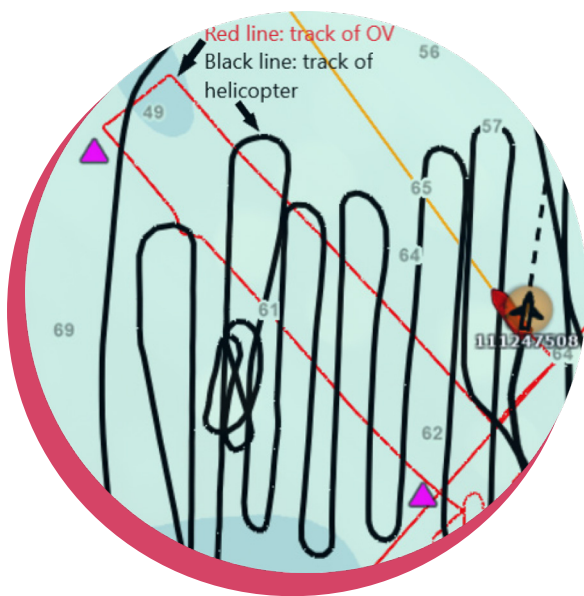
SAR Module

- SAR data displayed as a separate layer, together with real-time vessel positions, navigational charts, radar image and data from another sensors

Fast allocation of search area with consideration of all available data

Estimation of required resources

Easy alteration of search parameters



- Switching of any search/operation in the chart window and suggest search plan

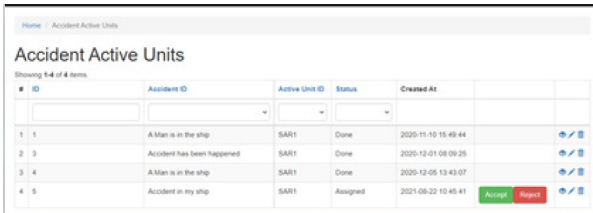
- Estimation of time/position to arrive

- * Automatic SAR reporting
- * Ability to get information from AIS
- * Ability to send message via VHF or AIS
- * Real time monitoring
- * Warn SAR to operate in mobile application via notification system
- * Inform SMC (SAR Mission coordinator)
- * Ability to get information from AIS



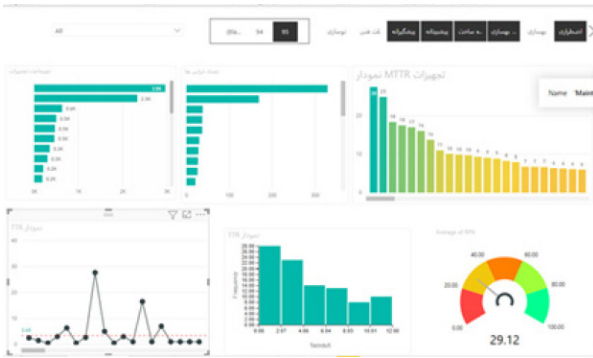
MAS Module

The MAS module functions as a leading software solution in MRCC operations and handles the following duties:



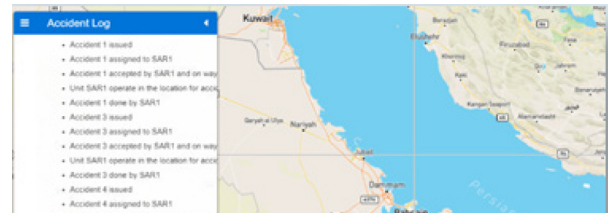
ID	Accident ID	Active Unit ID	Status	Created At
1	A Man in the ship	SAR1	Done	2020-11-10 15:49:44
2	Accident has been happened	SAR1	Done	2020-12-01 08:09:25
3	A Man in the ship	SAR1	Done	2020-12-05 13:42:07
4	Accident in my ship	SAR1	Assigned	2021-08-22 10:45:41

Receiving initial distress messages

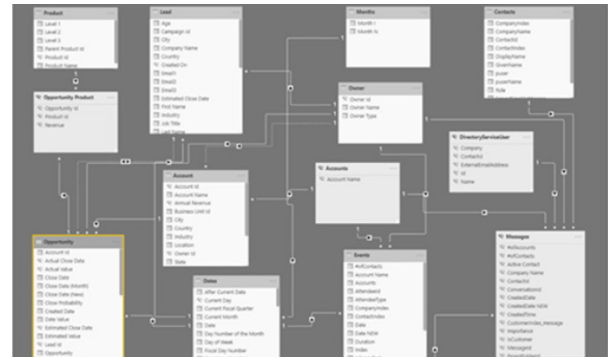


Providing a management reporting panel capable of calculating real-time statistics

- Inform SMC (SAR Mission coordinator)
- Ability to send message via VHF or AIS
- Estimation of time/position to arrive
- Real time monitoring
- Salvage data displayed as a separate layer, together with real-time vessel positions, navigational charts, radar image and data from another sensors
- Ability to calculate initial risk assessment according to Nairobi 2007 convention criteria
- Ability to calculate initial risk assessment for entering the place of refuge



Retrieving information from AIS



Customizing the system according to the client's organizational structure

Navigate Beyond the Horizon

www.hounamioffshore.com

